

THE PORT AUTHORITY OF NY & NJ

**PROCUREMENT DEPARTMENT
4 WORLD TRADE CENTER
150 GREENWICH STREET, 21ST FLOOR
NEW YORK, NY 10007**

10/9/2018

ADDENDUM # 3

To prospective Bidder(s) on Bid # 54556: Supply and Deliver PATH Rail Name Plates

Now due back on 10/15/2018, no later than 11:00AM

(originally due on 10/10/2018, no later than 11:00AM)

I. CHANGES/MODIFICATIONS

The following changes/modifications are hereby made to the solicitation document:

1. The Bid due date is extended to 10/15/2018, no later than 11:00AM.
2. The contact person for this Bid is as listed at the bottom of this Addendum.

II. BIDDER'S QUESTIONS AND ANSWERS

The following information is available in response to questions submitted by prospective Bidders. The responses should not be deemed to answer all questions, which have been submitted by Bidders to the Port Authority. It addresses only those questions, which the Port Authority has deemed to require additional information and/or clarification. The fact that information has not been supplied with respect to any questions asked by a Bidders does not mean or imply, nor should it be deemed to mean or imply, any meaning, construction, or implication with respect to the terms.

The Port Authority makes no representations, warranties or guarantees that the information contained herein is accurate, complete or timely or that such information accurately represents the conditions that would be encountered during the performance of the Contract. The furnishing of such information by the Port Authority shall not create or be deemed to create any obligation or liability upon it for any reason whatsoever and each Bidder, by submitting its Bid, expressly agrees that it has not relied upon the foregoing information, and that it shall not hold the Port Authority liable or responsible therefor in any manner whatsoever. Accordingly, nothing contained herein and no representation, statement or promise, of the Port Authority, its Commissioners, officers, agents,

representatives, or employees, oral or in writing, shall impair or limit the effect of the warranties of the Bidder required by this Bid or Contract and the Bidder agrees that it shall not hold the Port Authority liable or responsible therefor in any manner whatsoever. The Questions and Answers numbering sequence will be continued sequentially in any forthcoming Addenda that may be issued.

Question # 5	Can a clearer drawing for Material No. 0880144 be made available?
Answer # 5	See attached enhanced drawing 39001-04410A for Material No. 0880144, and refer back to Addendum #2.

This communication should be initialed by you and annexed to your Bid upon submission.

In case any Bidder fails to conform to these instructions, its Bid will nevertheless be construed as though this communication had been so physically annexed and initialed.

THE PORT AUTHORITY OF NY & NJ

SELENE ORTEGA, MANAGER
COMMODITIES AND SERVICES DIVISION

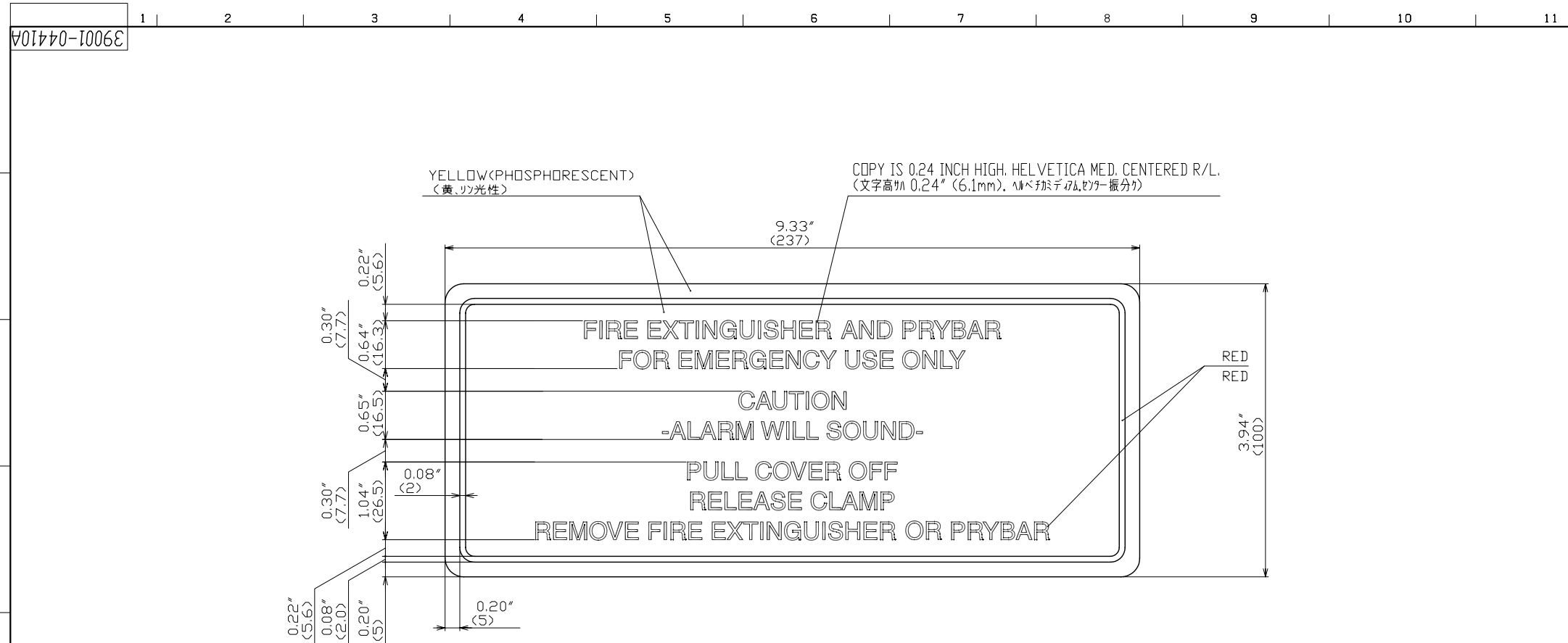
BIDDER'S FIRM NAME: _____

INITIALED: _____

DATE: _____

QUESTIONS CONCERNING THIS ADDENDUM MAY BE ADDRESSED TO THE BUYER, JOHN SANTIAGO, AT john.santiago@panynj.gov OR (212) 435-4613.

REVISEMENTS		DATE	APPROVED
ZONE	REV	DESCRIPTION	



APPLICABLE CAR	SET/CAR	WT/CAR	EFFECTIVITY
A	1	0	ALL CARS
C	1	0	ALL CARS

NOTES
 1. TYPE IS HELVETICA MEDIUM.
 2. MATERIAL: HIGH PERFORMANCE PHOTO LUMINESCENT MATERIAL WHICH SHALL MEET THE REQUIREMENTS OF APTA SS-PS-002-98 REVISION 1.
 3. COLORS: BACKGROUND - YELLOW (HIGH PERFORMANCE PHOTO LUMINESCENT) LETTERING AND PICTOGRAM - RED.

注記
 1. 字体ハ、ヘルベチカミディウム。
 2. 材質: フォトルミネセント材料 APTA SS-PS-002-98 REV.1 に従って。
 3. 色: 背景 - 黄、蛍光性
 文字及び図形 - 赤

Notwithstanding anything noted on this drawing to the contrary, the Port Authority shall have the right to use this drawing for Allowable Uses as provided for in Article 105 of the Contract. Subject to the Authority's rights and Allowable Uses granted per Article 105 of the PATH New Railcar Procurement Contract (Number 460005779), KAWASAKI RAIL CAR, INC. reserves all rights in and to any patents, trademarks, trade secrets and other intellectual property and proprietary information contained in this drawing, which are the property of KAWASAKI RAIL CAR, INC. or its licensees.

UNLESS OTHERWISE SPECIFIED	
TOLERANCE OF DIMENSIONS	
0.02" - 0.12" < 0.5 - 3 > ± 0.01" (0.2)	
0.12" - 0.24" < 3 - 6 > ± 0.01" (0.3)	
0.24" - 1.20" < 6 - 30 > ± 0.02" (0.5)	
1.20" - 4.70" < 30 - 120 > ± 0.03" (0.8)	
4.70" - 12.5" < 120 - 315 > ± 0.05" (1.2)	
12.5" - 40.0" < 315 - 1000 > ± 0.08" (2.0)	
40.0" - 80.0" < 1000 - 2000 > ± 0.12" (3.0)	
OVER 80.0" < 2000 - > ± 0.25" (6.0)	
ANGLES ± 1°	
DRILLED HOLE DIA. TOLERANCES	
0.12" - 0.24" < 3 - 6 > +0.006" (0.15), -0	
0.24" - 0.47" < 6 - 12 > +0.010" (0.25), -0	
0.47" - 0.98" < 12 - 25 > +0.012" (0.30), -0	
0.98" - 1.97" < 25 - 50 > +0.016" (0.40), -0	

CLASSIFICATION	SCALE	1:1
形状区分 <td>縮尺 <td></td> </td>	縮尺 <td></td>	
1	MATERIAL	HPPL
2	材質	HPPL
3	WEIGHT (LBS)	
4	重量 (kg)	
5	SURFACE TREATMENT	
	PAINT	
	塗装	
	有 (Yes) / 無 (No)	

REV.	DESCRIPTION	DATE	DRAWN	CHECKED	APP'D
訂正	改訂内容	改訂日付	担当	審査	承認
REVISIONS					
改訂					

2006. 8. 8
 承認 APPROVED
 検査 CHECKED
 作成 DRAWN
 図 DRG. NO. 39001-04410A
 1/1
 PROJECT PA-5 SYS.CODE 421 SER. NO. 363 REVISION c
 Solid MX

Port Authority Trans-Hudson Corp.
 Car Equipment Division
 DRAWN K.M. DATE 2012/07/30
 CHECKED A.U. DATE 2012/07/30
 APPROVED T.S. DATE 2012/07/30
 ENGINEER
 TITLE NAME PLATE-GEN (FIRE EXTINGUISHER)
 SIZE D DWG. NO. 39001-04410A
 SCALE NTS GROUP SHEET 1 OF 1
 FILE NAME: 39001-04410A.DWG